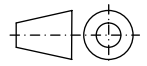


**CAPS**  
**CULOTS**  
**B15d**

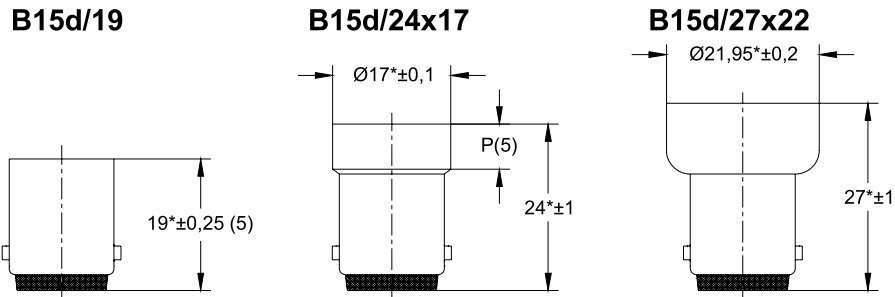


Page 1/2

Dimensions in millimetres - Dimensions en millimètres

The drawing is intended only to illustrate the dimensions essential for interchangeability.  
Le dessin a pour seul but d'illustrer les dimensions essentielles pour l'interchangeabilité.

For details of holder B15d, see sheet 7005-16.  
Pour les détails de la douille B15d, voir feuille 7005-16.

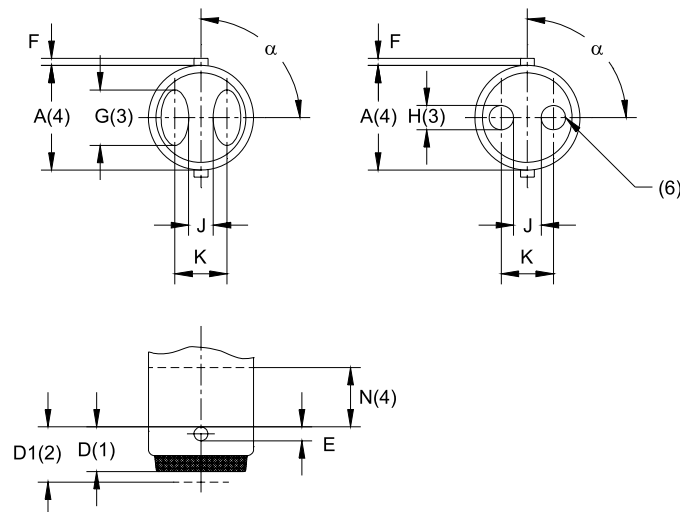


The drawings shown above are purely informative and are shown to sponsor component rationalization.

Caps may be made with a flare\*, the diameter of which shall be not more than 1 mm greater than the maximum permissible diameter of the corresponding cap without a flare.

Les dessins présentés ci-dessus sont donnés uniquement à titre d'information, et dans le but de faciliter la rationalisation des composants.

Les culots peuvent être munis d'un évasement\* à condition que le diamètre de cet évasement n'excède pas de plus de 1 mm le diamètre maximal permis du culot sans évasement correspondant.



\* This dimension is solely for cap design and is not to be gauged on the finished lamp.

\* Cette dimension s'applique seulement au culot et ne doit pas être vérifiée sur la lampe terminée.

Dimension	Min.	Max.
A (4)	15,0	15,25
D* (1)	6,0	6,6
D1 (2)	--	7,5
E	1,8	2,2
F	0,9	1,1
G (3)	Approx. 9	
H (3)	3,5	--
J	1,7	--
K*	7,0	8,0
N (4)	7,0	
P* (5)	6	7
α*	88°	92°

- (1) Dimension D is applicable to unmounted caps only.
- (2) Dimension D1 is applicable to caps on finished lamps only. The contact-making surfaces shall protrude beyond the insulation surface.
- (3) This dimension is checked with a millimetre scale.
- (4) Dimension N denotes the length over which both the minimum and maximum limits of dimension A shall be observed. Below dimension N, only the limits for dimension A maximum apply.
- (5) Dimension P denotes the length over which the skirt shall be cylindrical.
- (6) In the area where the contacts of the lampholder may land on the insulation surface of caps with round contacts during insertion into the lampholder, this surface shall be shaped in such a way as to allow the holder contacts to easily reach the intended operating position.

